

2014

Map of the Robert B. Gordon Natural Area for Environmental Studies

Facilities

West Chester University of Pennsylvania

Follow this and additional works at: http://digitalcommons.wcupa.edu/gna_sp_series

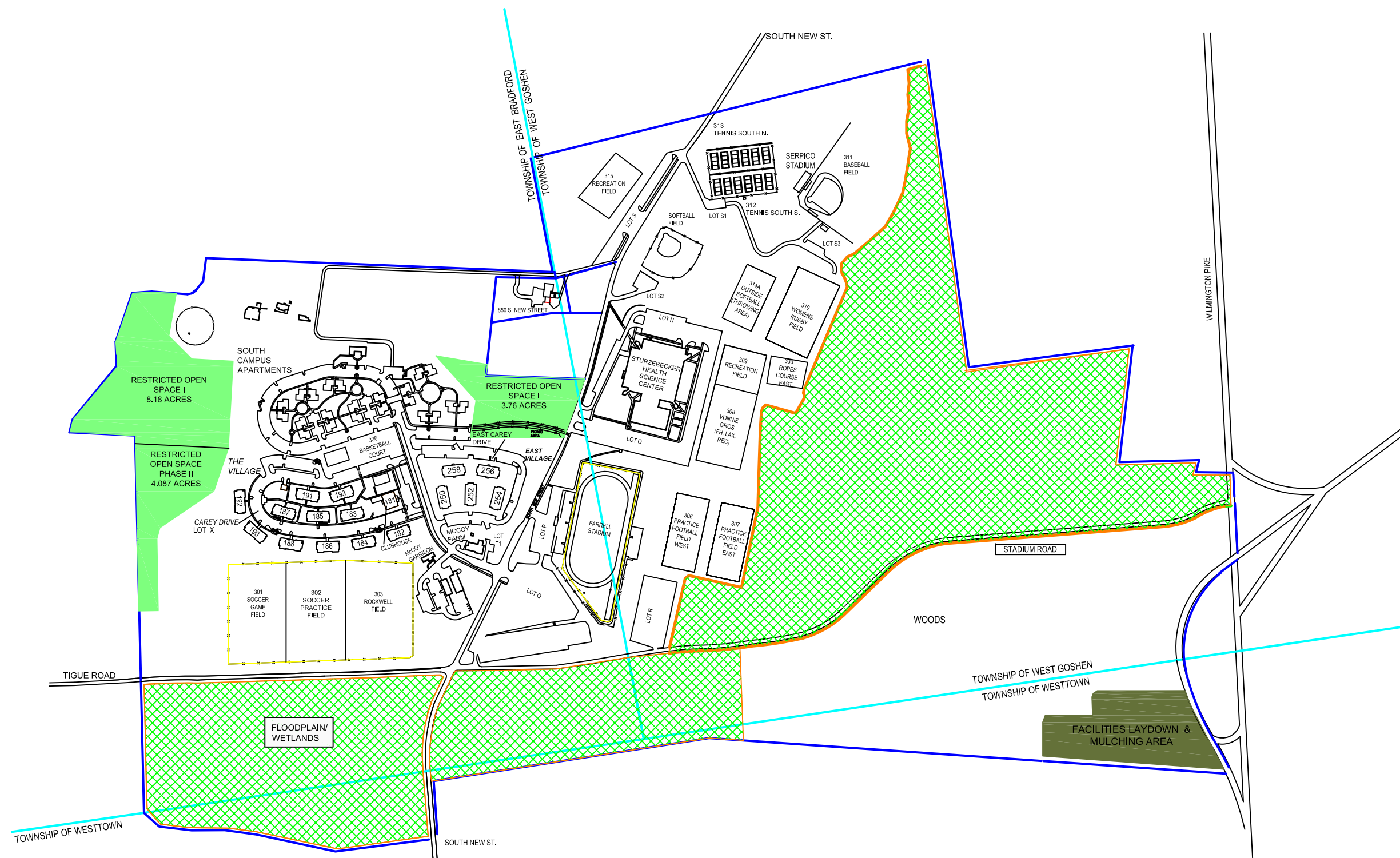


Part of the [Forest Management Commons](#)

Recommended Citation

Facilities (2014). Map of the Robert B. Gordon Natural Area for Environmental Studies. Retrieved from http://digitalcommons.wcupa.edu/gna_sp_series/41

This Map is brought to you for free and open access by the Gordon Natural Area History & Strategic Plan at Digital Commons @ West Chester University. It has been accepted for inclusion in Gordon Natural Area History & Strategic Plan Documents by an authorized administrator of Digital Commons @ West Chester University. For more information, please contact wccessler@wcupa.edu.



- LEGEND:**
- CAMPUS PROPERTY LINE
 - TOWNSHIP BOUNDARY
 - RESTRICTED OPEN SPACE
 - FACILITIES LAYDOWN & MULCHING AREA
 - ROBERT B. GORDON NATURAL AREA FOR ENVIRONMENTAL STUDIES

WEST CHESTER UNIVERSITY

- Restricted Open Space
- Campus Property Lines
- Township Boundaries
- Robert B. Gordon Natural Area for Environmental Studies