

West Chester University

Digital Commons @ West Chester University

Sustainability Research & Practice Seminar
Presentations

Sustainability Research & Creative Activities @
WCU

11-18-2020

Sustainability and the Evolution of the Academic Library Ecosystem: Pressing Forward with the Greening of WCU's Presser and F.H. Green Libraries

Walt Cressler

Follow this and additional works at: https://digitalcommons.wcupa.edu/srca_sp



Part of the [Library and Information Science Commons](#), and the [Sustainability Commons](#)



SUSTAINABILITY

RESEARCH and PRACTICE SEMINAR

November 18, 2020

Dr. Walt Cressler

University Libraries

*Sustainability and the Evolution of the Academic Library Ecosystem:
Pressing Forward with the Greening of WCU's Presser and F.H. Green Libraries*

Wednesday, 12:00 to 12:50 pm in our Zoom room

<https://wcupa.zoom.us/j/98207277254>

Today's Talk

Sustainability impacts of:

Libraries as physical places

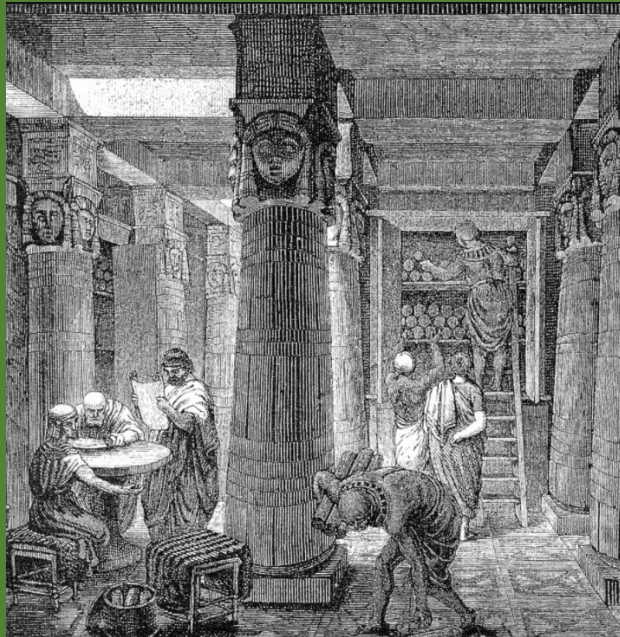
Libraries as virtual spaces

Sustainability of libraries as an idea

Sustainability ideas in libraries



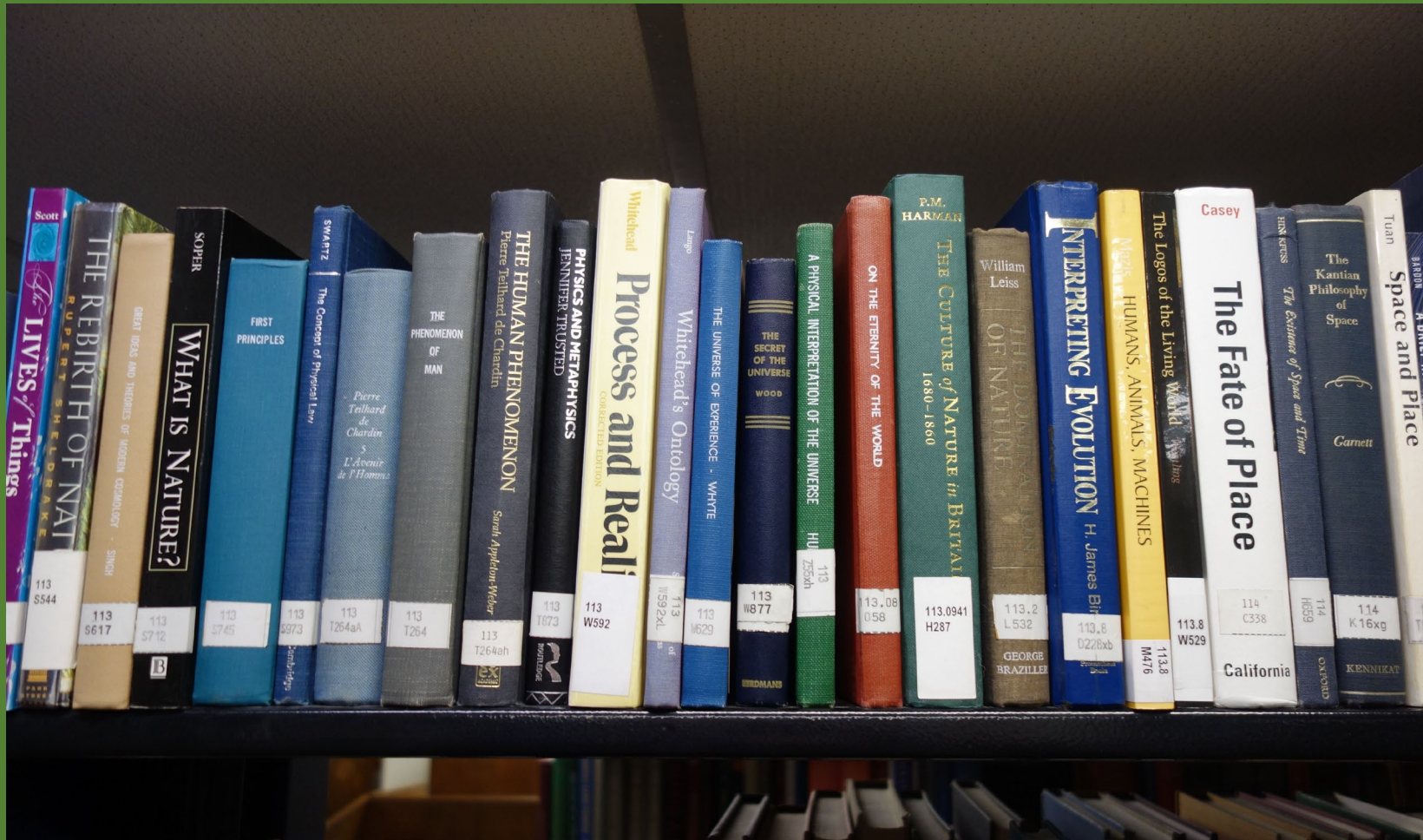
By Randa Mostafa1 - Own work, CC BY-SA 4.0,
<https://commons.wikimedia.org/w/index.php?curid=95334914>



By O. Von Corven - Tolzmann, Don Heinrich; Alfred Hessel and Reuben Peiss.
The Memory of Mankind. New Castle, DE: Oak Knoll Press, 2001,
Public Domain, <https://commons.wikimedia.org/w/index.php?curid=2307486>

Old model:

Libraries as physical repositories of the human cultural legacy



Libraries as physical places

BUILDINGS

Sets of systems within the cycles of matter and energy



Energy

Lights

Occupancy Sensors, Energy Saving Fixtures

Climate Control

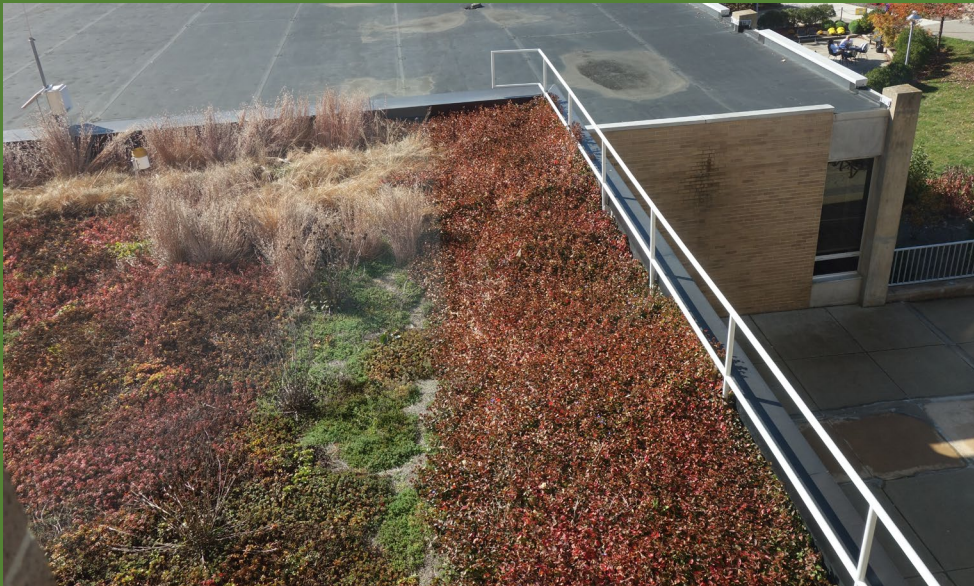
Geo-exchange Heating & Cooling, Green Roof

Information Devices

Miniaturization (offset by increase in numbers?)

Supply

Renewable Energy Credits





Solid

Building
Procurement
Recycling & Waste

Matter

SWOPE LEED certification
Recycled content, Green Office Program
Mini-bin program, Printing limits, centralized printing model,
air dryers, electronic waste recycling



Liquid

Drinking
Wastewater
Runoff

Reusable water bottle filling stations
(Low flush toilets)
Green Roof

Gas

Commuting
Carbon Sequestering

Remote access, bicycle racks
Tree canopy on grounds



New model:

Libraries as nodes in a global knowledge network
with physical spaces serving as local hubs of
community learning, creativity, and problem solving



Photo: Amy Ward



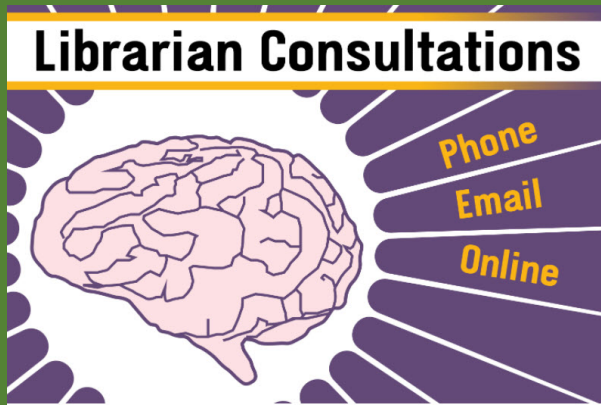
Libraries as virtual spaces

As part of an interconnected web of systems

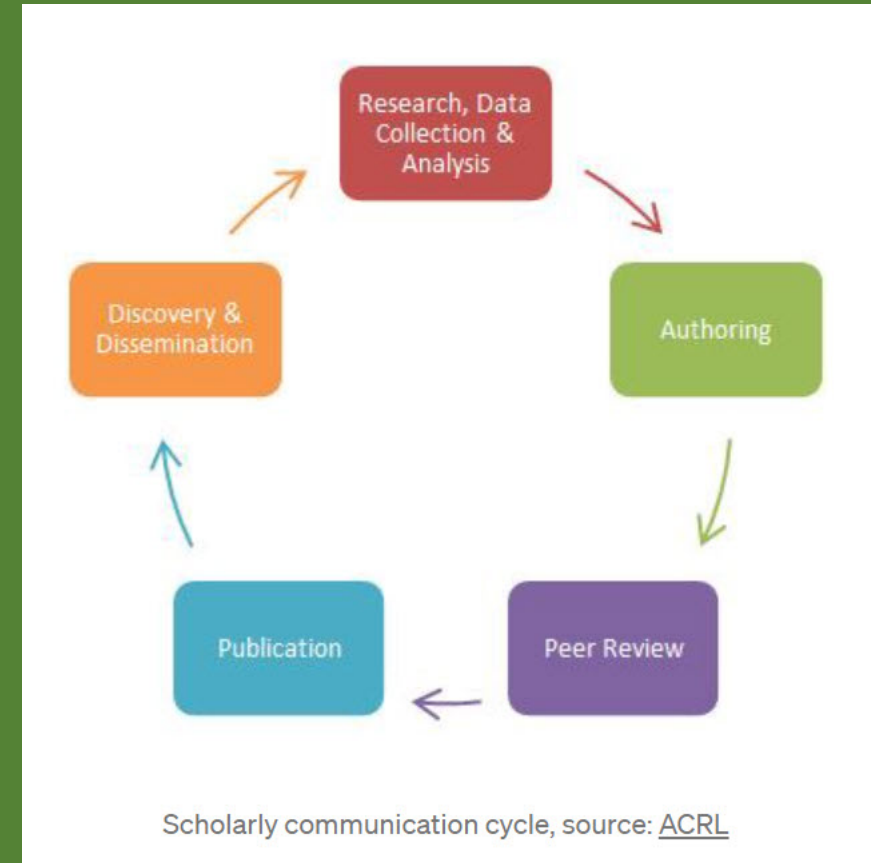
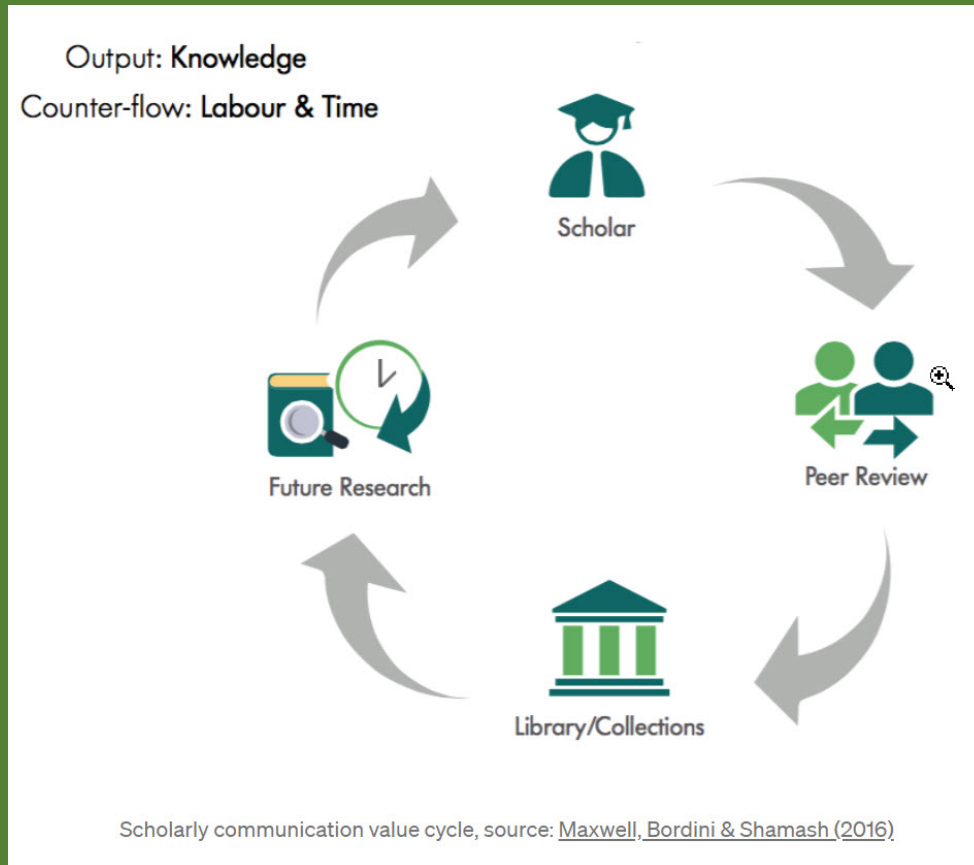


A transition accelerated by the COVID-19 pandemic

- * increased reliance on online sources
- * library instruction entirely online
- * library help largely online

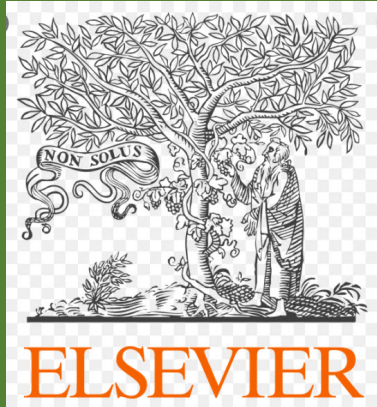


Academic libraries as participants in the scholarly communications ecosystem



Participants: Scholars > Publishers > Database Vendors > Libraries > Scholars

Sustainability of the Scholarly Communication Enterprise



High Corporate Publishing Profits vs. Public Access to Knowledge

Open Access
eliminating the pay wall



A movement accelerated by the COVID-19 pandemic

Access to evidence-based knowledge to draw upon for real world problem-solving
(pandemics, climate change, social justice, to name a few)

But who pays for publication?

Author pay models

Funder pay models

Library pay models

Institution pay models

(All in play)

Knowledge generation and the culture of sustainability
at West Chester University
disseminated and promoted globally through the
West Chester University Libraries

WCU
WEST CHESTER
UNIVERSITY

Digital Commons @ West Chester University

Home About FAQ My Account *An Online Repository of WCU's Intellectual and Creative Work*

[Home](#) > [SRCA](#) > [SRCA_SP](#)

Browse


- Collections
- Disciplines
- Authors
- Expert Gallery

Search

Enter search terms:

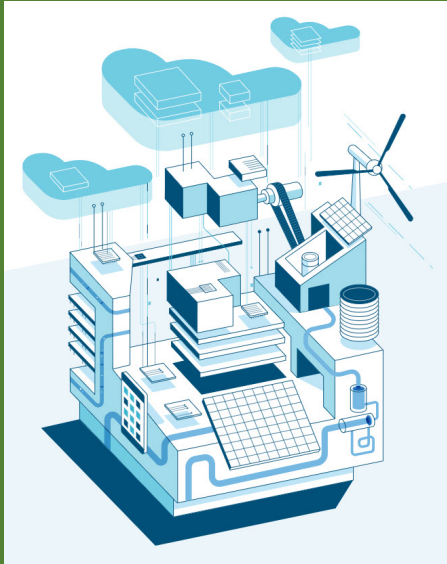
▾

[Advanced Search](#)



Sustainability Research & Practice Seminar Presentations

Where we are the locally-sourced scholars, editors, reviewers, publishers, disseminators, and librarians



Amazon Web Services

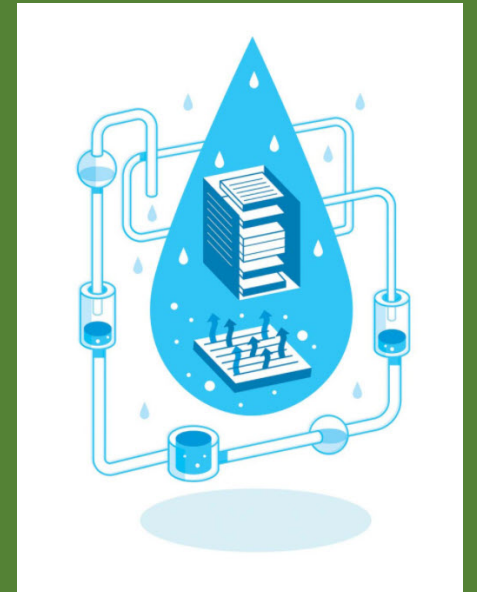
But still part of a global enterprise with global impacts

Ecological footprint of bepress

(Recently made part of the Elsevier publishing megaconglomerate)

Servers are part of Amazon Web Services (AWS)
With a goal of running on 100% renewable energy by 2025
& Greater water efficiency for cooling

High volume of electronic device recycling
Biking, walking, public transportation and rideshares to Berkeley office
Along with recycling and composting



Amazon Web Services

Where to from here?

Increasingly virtual

Increasingly open?

Increasingly inclusive?

More alternate narratives?

More voices changing our story from one of
an extractive and exploitative society to one of a regenerative and inclusive society?

