

West Chester University

Digital Commons @ West Chester University

Sustainability Research & Practice Seminar
Presentations

Sustainability Research & Creative Activities @
WCU

3-25-2020

STARS in our Eyes: Documenting WCU Sustainability Efforts

Bradley Flamm

Follow this and additional works at: https://digitalcommons.wcupa.edu/srca_sp



Part of the Sustainability Commons

WCU Sustainability Research and Practice Seminar

25 March 2020



STARS in our Eyes: Documenting WCU Sustainability Efforts

Bradley Flamm, Director, WCU Office of Sustainability

1



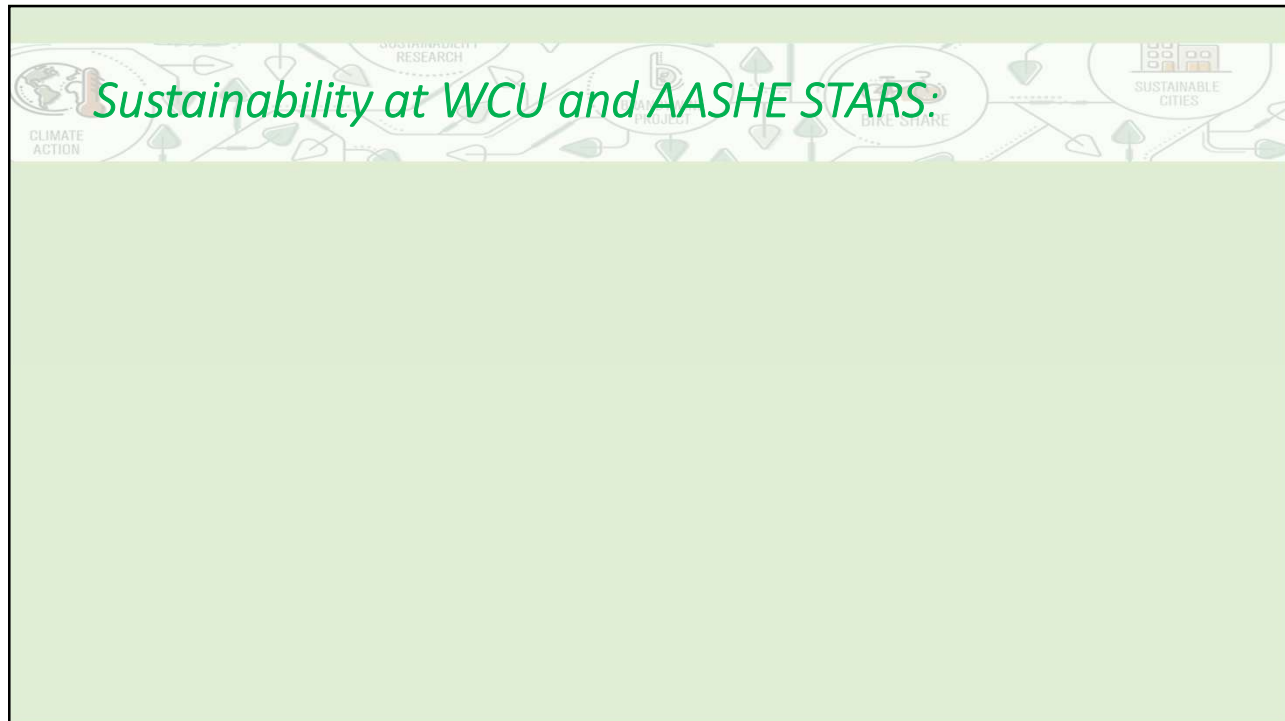
Today we'll discuss:

Sustainability at WCU and AASHE STARS

From Bronze to Silver

Where to from here

2



3

West Chester University
CLIMATE ACTION PLAN
CARBON NEUTRAL BY 2025

STUDENT SUCCESS
 WCU WEST CHESTER UNIVERSITY
 COMMUNITY ENGAGEMENT
 PERSONAL & PROFESSIONAL DEVELOPMENT
 LEARNING
 DIVERSITY & INCLUSION
 SUSTAINABILITY

4



How sustainability matters at WCU

- careers and citizenship
- organizational efficiency, operational costs, risk
- giving and funding
- students and employees
- community relations and new partnerships
- grand challenges and sense of purpose

* From *Beyond the Right Thing to Do: The Value of Sustainability in Higher Education* (an AASHE publication).

5



How STARS matters at WCU



6



7

8



9

Provisional results for 2020

From: stars_notifier@aaashe.org <stars_notifier@aaashe.org>
Sent: Friday, March 6, 2020 12:14 PM
To: Flamm, Bradley <BFLAMM@wcupa.edu>
Cc: crystal.simmons@aaashe.org
Subject: Thank you for your STARS submission

Dear Bradley Flamm,

Your institution's STARS Report has been successfully submitted. Based on the information in the report, West Chester University of Pennsylvania has submitted for a provisional STARS Silver Rating.




NEXT STEPS TO FINALIZE YOUR INSTITUTION'S RATING

As a benefit of paid participation in STARS, AASHE staff will work with you to help ensure the accuracy of your report before it is published and a rating is awarded:

- 1) AASHE staff will review about one-third of all credits (including randomly selected credits) to ensure that

* Copy of the *provisional* report located here: <https://www.wcupa.edu/Sustainability/carbonneutralityplan.aspx>.

10

Recognition Level		Minimum Overall Score
	Reporter designation	n/a ← WCU in 2012
	Bronze Rating	25
	Silver Rating	45 ← WCU 36.91 in 2018 ← WCU 52.38 in 2020 (provisional)
	Gold Rating	65
	Platinum Rating	85

11

Comparison to our peers*

University	Rank	Version	Submission Date
Appalachian State University	Gold	2.1	4/19/2019
College of Charleston	Registered to Use STARS, No Submissions		
University of North Carolina Wilmington	Silver	2	4/26/2016
University of Wisconsin La Crosse	Silver	2	5/20/2015
Western Washington University	Silver	2.1	3/1/2019

* From the Integrated Postsecondary Education Data System (IPEDS).

12

Comparison to regional institutions*

University	Rank	Version	Submission Date
Pennsylvania State University	Gold	2.1	9/14/2017
Temple University	Silver	2.1	2/21/2018
University of Delaware	Bronze	2.1	1/31/2020
Drexel University	Registered to Use STARS, No Submissions		
Millersville University	Registered to Use STARS, No Submissions		
Bloomsburg University			Not Listed
Rowan University			Not Listed
Saint Joseph's University			Not Listed
Widener University			Not Listed
LaSalle University			Not Listed

* As identified by WCU's Student Affairs Division.

13

Comparison to PASSHE institutions

University	Rank	Version	Submission Date
Slippery Rock University	Silver	2.1	2/22/2019
Clarion University	Registered to Use STARS, No Submissions		
Millersville University	Registered to Use STARS, No Submissions		
Shippensburg University	Registered to Use STARS, No Submissions		
Bloomsburg University			Not Listed
California University of PA			Not Listed
Cheyney University			Not Listed
East Stroudsburg University			Not Listed
Edinboro University			Not Listed
Indiana University of PA			Not Listed
Kutztown University			Not Listed
Lock Haven University			Not Listed
Mansfield University			Not Listed

14

A quick look at 2020 vs 2018

Category	2020	2018	Trend
Report Preface	0	0	↔
Academics	33.97 / 58.00	21.30 / 58.00	↑
Engagement	18.60 / 41.00	14.29 / 41.00	↑
Operations	29.72 / 69.00	23.93 / 70.00	↑
Planning & Administration	17.46 / 32.00	14.66 / 32.00	↑
Innovation & Leadership	02.50 / 02.50	00.00 / 00.00	↑


15

Where WCU shines:

Grounds
 Wellbeing and Work
 Public Engagement
 Energy

The Brandywine Project
 Geo-Exchange Heating and Cooling System
 Campus Gardens and the Gordon Natural Area

16



Where WCU missed points:

- Investment and Finance
- Buildings
- Campus Engagement
- Purchasing
- Sustainable Peer Educators
- Orientation Programs
- Alternatives to Drive-Along Commuting Support

17



Where to from here:





West Chester University Greenhouse Gas Emissions in Metric Tons of Carbon Dioxide Equivalents (MTCO₂E)



Year	On Campus Fuel Combustion	Purchased Electricity	Indirect Carbon Emissions
2009 - 2010	~12,000	~18,000	~20,000
2016 - 2017	~8,000	~15,000	~15,000

■ On Campus Fuel Combustion ■ Purchased Electricity ■ Indirect Carbon Emissions

Climate Justice



WEST CHESTER UNIVERSITY
ROBERT B. GORDON
Natural Area
For Environment
Studies

18



STARS in our future:




Teaching to the test / Prioritizing to the points?
 Two- or three-year cycle of updates?
 Sustainability Council committees


19



Questions?

Office of Sustainability

 @sustainableWCU
 WCUSustainability
 @wcu_sustainability

 www.wcupa.edu/sustainability/
sustainability@wcupa.edu

20