

2007

Effects of Habitat Quality on Macroinvertebrate Communities in Plum Run

Danielle Difederico

Follow this and additional works at: http://digitalcommons.wcupa.edu/gna_prso_series



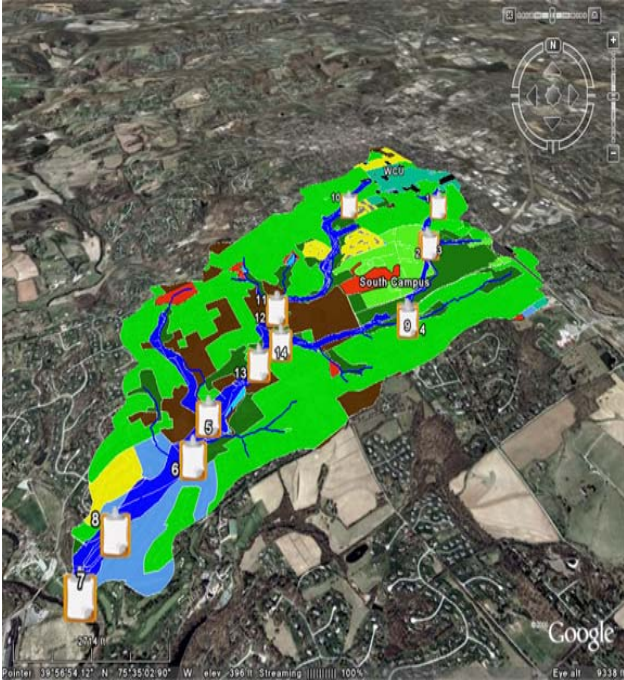
Part of the [Terrestrial and Aquatic Ecology Commons](#)

Recommended Citation

Difederico, D. (2007). Effects of Habitat Quality on Macroinvertebrate Communities in Plum Run. Retrieved from http://digitalcommons.wcupa.edu/gna_prso_series/1

This Poster is brought to you for free and open access by the Plum Run Stream Organism Survey at Digital Commons @ West Chester University. It has been accepted for inclusion in Plum Run Stream Organism Survey Documents by an authorized administrator of Digital Commons @ West Chester University. For more information, please contact wressler@wcupa.edu.

Effects of Habitat Quality on Macroinvertebrate Communities in Plum Run



View of Plum Run watershed, with sampling sites



Fieldwork primarily by Danielle Difederico (shown)

- Danielle Difederico (MS Thesis)
- 57 invertebrate taxa were identified in the Plum Run stream network
- Invertebrate communities were related to habitat quality at 14 locations
- Impaired habitat conditions were detected in both upper branches (nearest WCU's North Campus) and near the confluence of Plum Run with the Brandywine Creek
- Highest water quality and sensitive invertebrates were found within the WCU Gordon Natural Area