

2010

# A Public Road through the Gordon Natural Area Will Destroy this Ecological Treasure

Gerard Hertel

*West Chester University*, [ghertel@wcupa.edu](mailto:ghertel@wcupa.edu)

Follow this and additional works at: [http://digitalcommons.wcupa.edu/gna\\_sp\\_series](http://digitalcommons.wcupa.edu/gna_sp_series)



Part of the [Forest Management Commons](#)

---

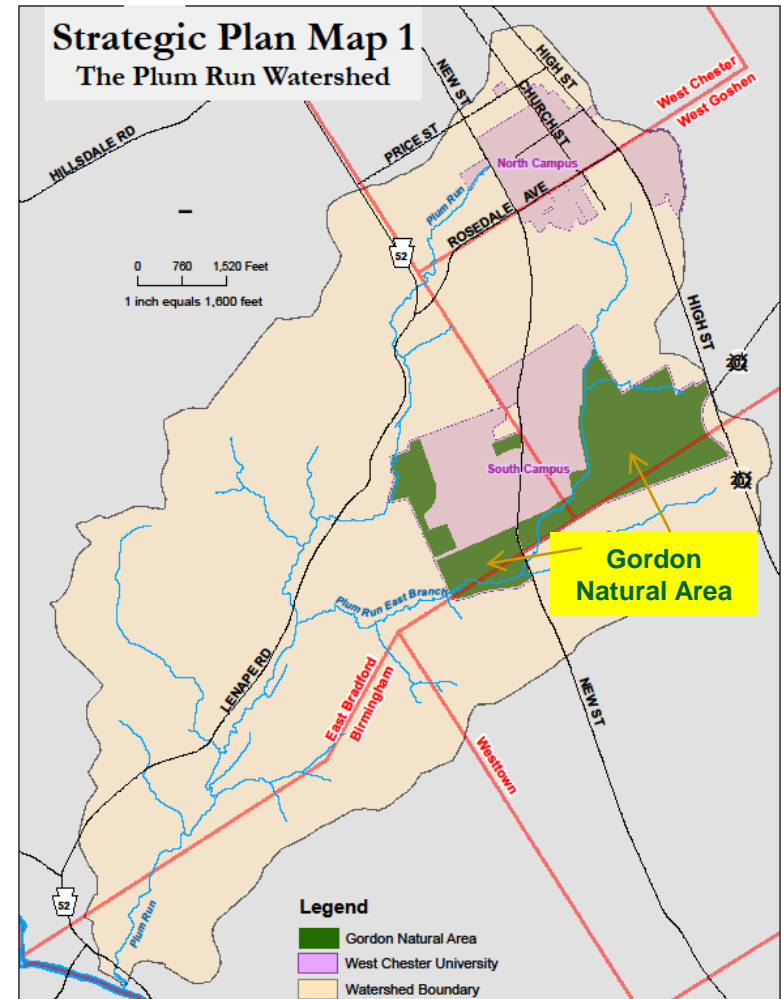
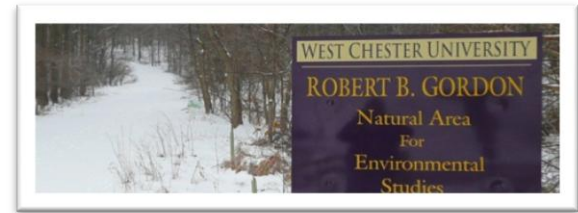
## Recommended Citation

Hertel, G. (2010). A Public Road through the Gordon Natural Area Will Destroy this Ecological Treasure. Retrieved from [http://digitalcommons.wcupa.edu/gna\\_sp\\_series/8](http://digitalcommons.wcupa.edu/gna_sp_series/8)

This Report is brought to you for free and open access by the Gordon Natural Area History & Strategic Plan at Digital Commons @ West Chester University. It has been accepted for inclusion in Gordon Natural Area History & Strategic Plan Documents by an authorized administrator of Digital Commons @ West Chester University. For more information, please contact [wcressler@wcupa.edu](mailto:wcressler@wcupa.edu).

# A Public Road through the **Gordon Natural Area** will destroy this ecological treasure because it would:

- Increase wildlife mortality
- Fragment the habitat by opening forest canopy, thereby eliminating interior forest habitat
- Disturb research & teaching
- Create a safety issue for users
- Increase stormwater runoff & associated pollution & siltation
- Increase non-native invasive plant populations
- Encourage more development
- Increase air pollution, human litter & encourage garbage dumping
- Destroy West Goshen's last public link to Penn's woods



The only green space in West Goshen dedicated to education & research (also located in Westtown & East Bradford)